

# WEST SHORE ORCHID SOCIETY

## APRIL 2017

NEXT MEETING	Wednesday, April 19, 2017	
TIME	6:00 p.m.	Conversation, Show Table plant registration.
	6:30 p.m.	Edgar Stehli will talk on "What to do with the New Orchid you buy at the Show" as our beginners corner presentation this month.
	7:00 p.m.	Speakers: Wayne Roberts & Edgar Stehli will talk on staging and entering your plants in our show.
PLACE	North Olmsted Community Cabin, 28114 Lorain Road, North Olmsted	

### PROGRAM

Our membership year is January to December. If you joined West Shore and paid your dues in August thru December, 2016, or renewed at our February meeting, you are covered for 2017. For the rest of us, it's time to renew and we do hope you renew as where else can you see beautiful orchids to admire, hear speakers from around the country and talk to growers who are happy to share their knowledge, along with a gift orchid at our December meeting all for the small sum of \$20.00. To renew you can pay your dues at the April meeting or send a check made out to the West Shore Orchid Society to our treasurer, John Rini, 6490 E. Vancey Dr., Brookpark, Ohio 44142.

Our show table was again fabulous in February. We had 34 plants brought in for display. April's meeting is the second show table of the New Year and we are just starting the new contest, so bring in your plants for judging. Again, you earn 10 points for 1<sup>st</sup>, 6 for 2<sup>nd</sup> and 4 for 3<sup>rd</sup> place winners. You also can win 8 points each for best species or best miniature. Anyone bringing in a plant receives 1 point for each plant brought to the show table and registered. So bring in your blooming plants for everyone to admire.

### ORCHID CALENDER

#### **WSOS Meeting**

**When** Wednesday May 17, 2017 – 6:00 PM Conversation, 7:00 PM Speaker  
**Where** North Olmsted Community Cabin, 28114 Lorain Road, North Olmsted  
**Description** Tom Sampliner on Borneo.

#### **Central Ohio Orchid Society Spring Show & Sale**

**When** Saturday & Sunday April 1st & 2nd  
**Where** Franklin Park Conservatory, 1777 East Broad Street, Columbus, OH  
**Description** Contact: Screll Jones, 614-864-7924 [krazyladyo@gmail.com](mailto:krazyladyo@gmail.com)

# ANNOUNCEMENTS

## FEBRUARY SHOW TABLE WINNERS

GREENHOUSE Professional	First Second Third	Clowesia Rebecca Northen Medivalcalcer decoratum Scaphosepalum breve	Edgar Stehli Edgar Stehli Edgar Stehli
GREENHOUSE Amateur	First Second Third	Col Apple Blossom Paph Honey Dew No Entry	John Rini John Rini
CATTLEYA Classes 10 – 26	First Second Third	Lc Rojo 'Valentine's Day' Bc Makai 'Louise' No Entry	Pam Everett Pam Everett
PAPHIOPEDILUM Classes 27 - 39	First Second Third	Paph W. Stevens Paph Ang-Thong No Entry	Bob Galaska Bob Galaska
PHRAGMIPEDIUM Classes 40 -42	First Second Third	No Entry No Entry No Entry	
PHALAENOPSIS Classes 43 – 59	First Second Second Third	Phal Hybrid – White w/red lip Phal White Dream 'V3' Phal Hybrid – Mini Purple Phal Hybrid - Pink	Marolyn Smith Bob Galaska Chester Kieliszek Carol Lalonde
VANDA Classes 60 – 69	First Second Third	No Entry No Entry No Entry	
ONCIDIUM Classes 70 – 78	First Second Third	Wils Spacemine 'Red Rendezous' Onc Twinkle 'Sunlight' Beallara Tropic Lily 'Chocolate Drop'	Pam Everett Jerry Echols Pam Everett
CYMBIDIUM Classes 79 – 81	First Second Third	Cym Sweetheart 'Sensation" No Entry No Entry	Pam Everett
DENDROBIUM Classes 82 – 88	First Second Third	Den Roy Tokunaga Den Mini Snowflake Den Taksin 'Oberon' x Taksin 'Christmas'	Pam Everett Pam Everett Pam Everett
MISCELLANEOUS Classes 89 - 99	First Second Third	No Entry No Entry No Entry	
FEWER THAN 20 PLANTS	First Second Second Third	Blira Marfitch Howards Dream Epi centiopetalum Blc Lily Marie Max costaricensis 'Different'	Ingrid Tuxhorn Debbie Wearsch Ingrid Tuxhorn Debbie Wearsch
BEST SPECIES		Epi centiopetalum	Debbie Wearsch
BEST MINATURE		Max costaricensis 'Different'	Debbie Wearsch

## SHOW TABLE STANDINGS FOR 2017

STANDINGS FOR 2017	Greenhouse: Pro	Points
	Edgar Stehli	23
	Wayne Roberts	0
	<b>Greenhouse: Am</b>	
	John Rini	18
	Keith Alexander	0
	Patty Conrad	0
	<b>Under Lights/Windows:</b>	
	Pam & Darryl Everett	72
	Bob Galaska	25
	Marolyn Smith	11
	Carol Lalonde	8
	Jerry Echols	7
	Chester Kieliszek	7
	Marilyn & Bob Heidelman	2
	Rene Doubrava	1
	<b>Less Than 20 Plants:</b>	
	Debbie Wearsch	28
	Ingrid Tuxhorn	18

Thank you to all who brought in their blooming plants for our members to enjoy on the show table and good luck with this year's contest.

It is show time again and we are looking for plants to display at the Central Ohio Orchid Society show in Columbus setting up on Friday 3/31 and our show at the rec center setting up on Friday 4/28. If you have something nice which you would like to show, please contact me to make arrangements to get the plants to any of the shows, 330-467-3731, or reply by email to [kieliszekc@aol.com](mailto:kieliszekc@aol.com).

**FOR ALL:** Those people bringing plants to any of our displays we will be setting up at the various shows please include a sheet of paper with your name, the plant's name and the cross if you know it. The plants name and cross should be found on its label. Orchids with no identification tags or labels can still be displayed as unknown. This information written down on paper makes it easier for the person setting up the display to fill out the registration forms and labels for all the plants in the display. Better yet, make out one of the registration tags we will have available at the April meeting for each plant similar to what we have been doing for the plants on the show table over the last several months. Also put your name on the pot. This can be an address label somewhere on the pot making it easy to get the plants back to their owners.

We are again looking for sponsors for the trophy awards at our show, we still have a few classes without a sponsor, (\$20.00 to sponsor with your name going on the class award as the sponsor). Contact me if you are interested at 330-467-3731 or [kieliszekc@aol.com](mailto:kieliszekc@aol.com).

### *From the President's Potting Bench,*

Hello My Friends,

February's meeting was very enjoyable, with our guest speaker, Russ Vernon, whom I could listen to all day, talk on Odontoglossums. It is always a joy having him come to our meetings. Thanks to our ladies, Pat and Marolyn, our hospitality was a great success. Our plant table also was like having our own little mini-show, just wonderful. Because of our show being one week after our meeting, hospitality's theme will be pot-luck. So ladies, put your talents to good use, and if you have the time, please bring in

something you would like to share with the member-ship. Our members have been so pleasing when asked for a little help, and I for one would be so thankful. Now it is time for our show, being around the corner, I believe there is much needed help, in set-ups and tear-downs, bring in your plants that maybe in bloom ( boy I pray we have some ), and where else help will be needed. Also in hospitality for Friday and Saturday, a dish would be nice to share with all those who set-up, our vendors, then too the judges. West shore has always done their very best to please our visitors and helpers, so please let us continue our perfect record in being so gracious. See you all on April 19th. Until then have a blessed Easter,

God Bless, your president, Elaine.

#### Current Officers for 2017 – 2018 Contact Information

President:	Elaine Galaska	<a href="mailto:emgalaska@hotmail.com">emgalaska@hotmail.com</a>	330-562-2943
Vice President:	Wayne Roberts	<a href="mailto:rfs@orchidmix.com">rfs@orchidmix.com</a>	440-236-5571
Treasure:	John Rini	<a href="mailto:jrini16@gmail.com">jrini16@gmail.com</a>	216-538-5537
Secretary:	Bob Galaska	<a href="mailto:emgalaska@hotmail.com">emgalaska@hotmail.com</a>	330-562-2943
Trustee:	Chester Kieliszek	<a href="mailto:kieliszekc@aol.com">kieliszekc@aol.com</a>	330-467-3731
Newsletter:	Chester Kieliszek	<a href="mailto:kieliszekc@aol.com">kieliszekc@aol.com</a>	330-467-3731
Librarian:	Allan Lund	<a href="mailto:allan.lund320@gmail.com">allan.lund320@gmail.com</a>	
Show Chairs:	Wayne Roberts & Chester Kieliszek		
Immediate Past President	Teressa Nemeth	<a href="mailto:gardenguru@centurytel.net">gardenguru@centurytel.net</a>	440-233-8757

#### Meeting dates in 2017

Weds. April 19 <sup>th</sup>	Staging and entering your plants for our show with setup April 28 <sup>th</sup>
Sat. & Sun April 29 <sup>th</sup> & 30 <sup>th</sup>	WSOS Show at Strongsville Rec. Center
Weds. May 17 <sup>th</sup>	Tom Sampliner on Borneo
Weds. June 21 <sup>st</sup>	Wayne Roberts & Edgar Stehli on Summering your orchids
Sun. August 20 <sup>th</sup> –	Picnic
Weds. September 20 <sup>th</sup>	TBD
Weds. October 18 <sup>th</sup>	TBD
Weds. December 20 <sup>th</sup>	Christmas dinner and gift plants

#### GREATER CLEVELAND SHOW WINNERS

Allan Lund	Phal. Hybrid - White	Yellow
	Cat trianaei	Red
	Phal Hybrid - Yellow	Red
	Phal Sweet Memory Babble'	Blue
	Paph spicereanum	Blue, Best of Class
	Milt Freebyrd	Red
	Cym eburneum	Blue
John Rini	Iwana Apple Blossom – semi alba	Red
Bob Galaska	Paph W Stevens	Red
	Paph Ang-Thong	Red
	Phrag Don Wimble	Red
Bob & Marilyn Heidelman	Phal White Dream 'V3'	Red
	Lc Goldbrad	Yellow
	Phal Hybrid 'Snow White'	Blue
	Phal Hybrid 'Mini Mitch'	Blue
	Phal Hybrid 'Pinky Lilac'	Blue
	Phal Hybrid 'Dark Lip'	Blue
	Phal Hybrid 'Mini Tiger'	Blue
	Bulb Elizabeth Ann 'Buckleberry'	Blue
	Phal Hybrid – White	Blue
	Pat Corbett	Ctd Midnight 'Ebony and Ivory'
Chester Kieliszek	Phal Hybrid – Mini Purple	Yellow

The picture at the end of the newsletter is that of the West Shore display at the Greater Cleveland Orchid Society Show at the Botanical Garden.

### GREATER AKRON SHOW WINNERS

Allan Lund	Milt Freebyrd	Yellow
	Paph spicereanum	Blue
	Phal Hybrid - Stripes	Red
Jerry Echols	Phrag Fritz Schomburg	Red
Bob Galaska	Phrag Don Wimbler	Blue
	Phal White Dream 'V3'	Red
	Phal Ox Black Face	Blue
	Phal Sogo Jessica	Blue
	Paph W Stevens	Red
	Paph Enzain Penny x Incharm	Red
	Paph Nike's Delight x glaucophyllum	Yellow
	Phrag Nicole Towers	Yellow
	Paph Taisuco America x Winston Churchill	Red
Bob & Marilyn Heidelman	Phal Hybrid	Yellow
	Phal Hybrid 'Mini Mitch'	Red
	Phal Hybrid 'Pinky Lilac'	Blue
	Phal Hybrid 'Dark Lip'	Blue
	Phal Hybrid 'Mini Tiger'	Red
	Phal Hybrid 'Snow White'	Blue
	Phal Sogo Allen 'Yellow'	Blue
	Den Mini Snowflake	Yellow
	Phal Sogo Pearl	Yellow
	Phal Hybrid 'Jimi'	Blue
John Rini	Chysis bractescens	Yellow
Pat Corbett	Slc Dancing Fairy 'NN'	Blue
	Den Enobi	Red
	Epi Little Miss Sunshine	Blue
Marolyn Smith	Phal Hybrid w/red lip	Red
Patty Conrad	Paph primula 'Ching Hui'	Red
Chester Kieliszek	Phal Hybrid 'Mini Purple'	Blue

As you can see we received a number of ribbons at the GCOS and GAOS shows where we had enough orchids to put up 50 square foot displays. We will need even more orchids at our show at the end of April, so if you have something nice in bloom, please bring it to the Strongsville rec center for entering into our display. Our program this month focuses on entering your plants into our display, but if you still need help, there will be a number of members available to help with entries.

I would like to welcome the following new members to West Shore since the last newsletter went out, Renee Grdesser and Jean Marlow. We are always looking for new members to keep our society strong, so bring a friend who likes growing things to our next meeting and introduce them to the wonderful world of orchids.

Anyone not receiving a newsletter email (Those on snail mail) and wanting one can request it by emailing Chester Kieliszek at [kieliszek@aol.com](mailto:kieliszek@aol.com) and I will put you on the email list.

## ***Windswept in Time Orchids – OPEN HOUSE!***

Edgar and Kim Stehli

2017 Open House Events

Spring: May 27 & 28 (Sat. & Sun.) 11am – 5pm

Fall: November 4 & 5 (Sat. & Sun.) 11am – 5pm

8066 Skyline Drive

Broadview Heights, Ohio 44147

440-838-5757

## ***Roberts Flower Supply 2017 OPEN HOUSE!***

12390 Root Rd. Columbia Station OH 440-236-5571

Come on over to our place to see native orchids in bloom throughout our yard!

Our greenhouse/grounds will be open for public viewing

May 26<sup>th</sup>, 27<sup>th</sup> & 28<sup>th</sup>, from 10 am to 5 pm all days'

Not possible? Call ahead to come at your convenience.

We will have specials on tropical plants as well as native cypripediums.

SEE YOU THERE!

10% off potting supplies with this flyer.

Free plant if dressed in orchid clothing

Special note: We plan to have our new outdoor growing area completed.

Come see the new area.

Fall sales dates Dec. 15-16, 2017

The following article was reprinted from the American Orchid Society website. Copyright American Orchid Society -- [www.aos.org](http://www.aos.org)



### **Epiphyte or Terrestrial? Sympodial or Monopodial?**

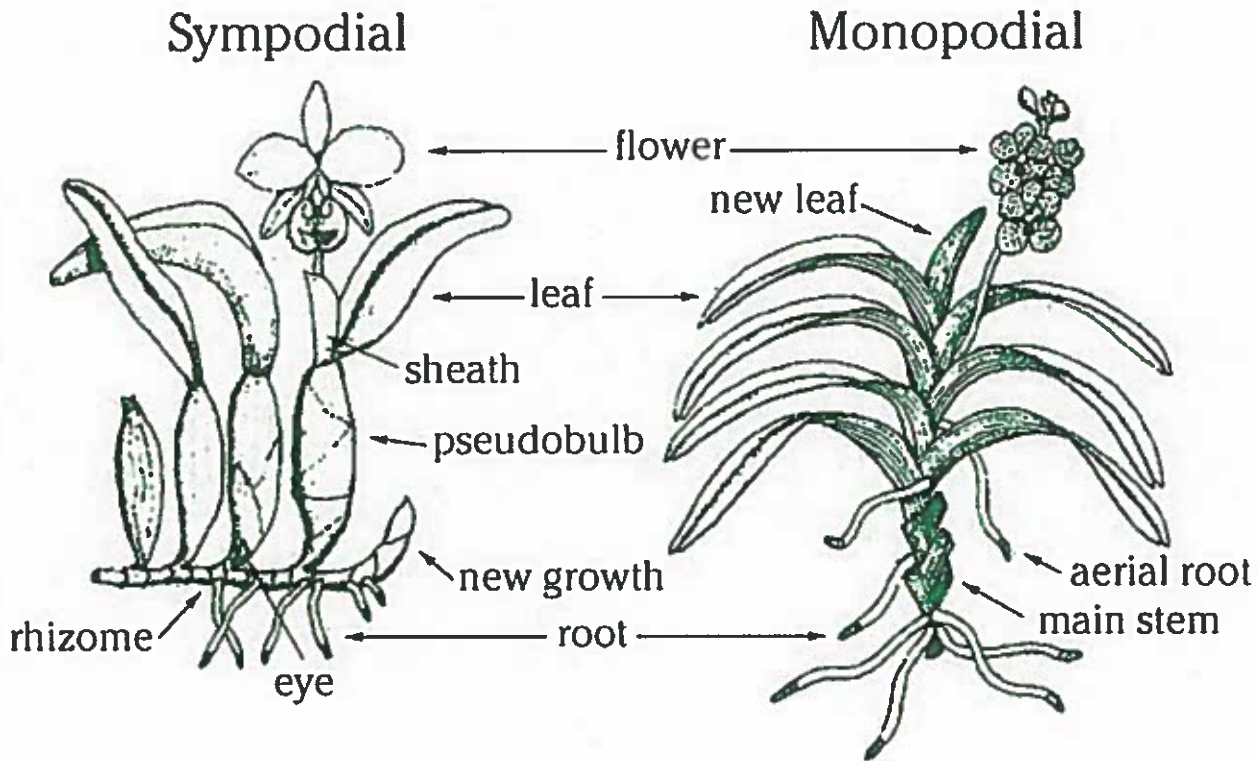
Understanding where and how orchids grow will help you better understand how to grow them. This newsletter looks at the growth habits of orchids.

The structure of an orchid plant is the same as any plant for it has roots, stems, leaves and flowers. But these parts are adapted to its way of life and differ somewhat from familiar plants which you grow in your garden.



## Epiphytes and Terrestrials

Most of the cultivated orchids are *epiphytes*, such as the Colombian *Cattleya trianae* pictured above. They do not grow in the ground but instead grow in trees or on rocks. This puts their roots out into the air rather than underground. The word "epiphyte" (EP-ih-fite) means "air plant" or literally "to grow upon a plant". Epiphytes are not parasites. They do not take anything from the host plant. Epiphytes perch upon other plants but get their moisture and nutrients from air, rain and debris. Cymbidiums and other orchids are terrestrial, which means "growing in the ground". The *Sobralia* pictured at the bottom of the previous page is a terrestrial orchid. Most of the native orchids of the United States and all the natives of Europe are terrestrials. Some epiphytic orchids have adapted to growing on rocks because nearby forests may not offer enough light. Rock-growing orchids are known as lithophytes.



### Sympodial and Monopodial

There are two types of growth found in orchid plants. One growth pattern is called sympodial (sim-POH-dee-al), the other is monopodial (mon-o-POH-dee-al).

For sympodial think of sideways. An orchid with sympodial growth moves sideways. From a connecting stem (rhizome) which grows horizontally, it puts up successive growths in which each one is a duplicate of the one before.

Examine the sketch. The upright growths are called pseudobulbs, each a repetition of the one before and growing parallel to each other. A plant may produce one new pseudobulb at a time, perhaps even only one per year. But it may make two or more growths simultaneously, and a large plant may make several new growths at the same time. Hybrids may have more than one cycle of growth per year.

The majority of the cultivated orchids are sympodial - they grow sideways. New growth begins at the base of the previous mature growth. *Cattleya*, *Oncidium*, *Dendrobium* and *Cymbidium* are all examples of sympodial orchids.

On the other hand, monopodial (mon-oh-POH-dee-al ) orchid plants grow continuously taller - upwards, and some reach many feet in height under ideal conditions. Think of the vandas, growing outdoors in the tropics. Others have reasonable height limits, such as the phalaenopsis group. Monopodial means "one foot".

A monopodial orchid has neither pseudobulbs nor rhizomes. It grows continually upward from the top of the plant. It produces roots and flowers at intervals from the vertical stem.

Quite in contrast to the foliage habits of sympodial orchids, a monopodial orchid has alternate leaves the entire length of the stem. Lower leaves may fall off as the plant ages. *Phalaenopsis*, *Vanda*, *Ascocenda* and *Angraecum* are all examples of monopodial orchids.

*Greg Allikas, August 2009*

