

# WEST SHORE ORCHID SOCIETY

## FEBRUARY 2017

NEXT MEETING    Wednesday, February 15, 2017

TIME                    6:00 p.m.            Conversation, Show Table plant registration.

                             6:30 p.m.            Wayne Roberts will conduct our beginners corner this meeting.

                             7:00 p.m.            Speaker: Russ Vernon owner of New Vision Orchids and an AOS judge will make a return trip to West Shore to speak on Odontoglossums: Russ grew up in Cleveland, Ohio. Early on he had an interest in plants, helping in the yard and growing cacti purchased with his allowance. His parents and grandparents were all interested in various aspects of horticulture.

When Russ was 12 years old, his uncle arrived with 6 orchids saying, "If you can grow those darned cacti, you ought to be able to grow these." And a career was launched.

Russ is a graduate of Ohio State University majoring in horticulture/floriculture. He has worked for Orchid by Hausermann, A&P Orchids, Ball State University and the Wheeler Orchid Collection and Species Bank, and Jim Davis, the creator of Garfield the Cat.

In 2004, Russ and his wife Anita started New Vision Orchids. The company specializes in Phalaenopsis, Odontoglossums and their intergenerics, Miltoniopsis and Lycastes. The biggest area of focus is hybridizing and of course, wholesale and retail sales.

Russ is a judge of the American Orchid Society and is past President of the International Phalaenopsis Alliance and committee chair of the Conservation Committee, Mid-America Orchid Congress. He and Anita have two daughters.

Russ would be happy to take pre orders. Members should email him to make sure what they want is still available. If it isn't, he can offer alternatives. Email address: [newvisionorchids.com](http://newvisionorchids.com)

PLACE

North Olmsted Community Cabin, 28114 Lorain Road, North Olmsted

### PROGRAM

Our membership year is January to December. If you joined West Shore and paid your dues in August thru December, 2016, or renewed at our December meeting, you are covered for 2017. For the rest of us, it's time to renew and we do hope you

renew as where else can you see beautiful orchids to admire, hear speakers from around the country and talk to growers who are happy to share their knowledge, along with a gift orchid at our December meeting all for the small sum of \$20.00. To renew you can pay your dues at the February meeting or send a check made out to the West Shore Orchid Society to our treasurer, John Rini, 6490 E. Vancey Dr., Brookpark, Ohio 44142.

Our show table was again fabulous in December. We had a mad dash to the finish line and ended up with 86 plants brought in for display. February's meeting is the first show table of the New Year and we are starting a new contest, so bring in your plants for judging. Again, you earn 10 points for 1<sup>st</sup>, 6 for 2<sup>nd</sup> and 4 for 3<sup>rd</sup> place winners. You also can win 8 points each for best species or best miniature. Anyone bringing in a plant receives 1 point for each plant brought to the show table and registered. So bring in your plants and let the competition begin.

## ORCHID CALENDER

### **WSOS Meeting**

**When** Wednesday February 15, 2017 – 6:00 PM Conversation, 7:00 PM Speaker

**Where** North Olmsted Community Cabin, 28114 Lorain Road, North Olmsted

**Description** Russ Vernon will be speaking on Odontoglossums.

### **Greater Cleveland Orchid Society Spring Show and Sale**

**When** Saturday & Sunday February 18<sup>th</sup> & 19<sup>th</sup>

**Where** Cleveland Botanical Garden, 11030 East Blvd., Cleveland, OH

**Description** Contact: Margaret Evens, 330-656-1798 [moggymate@gmail.com](mailto:moggymate@gmail.com)

### **Miami Valley Orchid Society Show**

**When** Saturday & Sunday February 18<sup>th</sup> & 19<sup>th</sup>

**Where** Cox Arboretum, 6733 Springboro Pike, Dayton, OH

**Description** Contact: Michele Little 513-423-8937 [my3snakes@yahoo.com](mailto:my3snakes@yahoo.com)

### **Greater Lansing Orchid Society Show**

**When** Saturday & Sunday February 25<sup>th</sup> & February 26<sup>th</sup>

**Where** Michigan State University, Plant & Soil Science Bldg., 1066 Bogue St., East Lansing, MI

**Description** Contact: Doris Asher 517-332-0004 [asherdoris@juno.com](mailto:asherdoris@juno.com)

### **Greater Akron Orchid Society Show**

**When** Saturday & Sunday March 4th & 5th

**Where** 937 E. Waterloo Rd., Akron, OH

**Description** Contact: Jane Bush 330-468-2589 [bushjj@juno.com](mailto:bushjj@juno.com)

### **Illinois Orchid Society Show 'Orchids All Around'**

**When** Saturday & Sunday March 11th & 12th

**Where** Chicago Botanic Gardens, 1000 Lake Cook Rd., Glencoe IL

**Description** Contact: Kay Perry 843-290-9917 [spencer.aloysius@gmail.com](mailto:spencer.aloysius@gmail.com)

### **Central Ohio Orchid Society Spring Show & Sale**

**When** Saturday & Sunday April 1st & 2nd

**Where** Franklin Park Conservatory, 1777 East Broad Street, Columbus, OH

**Description** Contact: Screll Jones, 614-864-7924 [krazyladyo@gmail.com](mailto:krazyladyo@gmail.com)

# ANNOUNCEMENTS

## DECEMBER SHOW TABLE WINNERS

<b>GREENHOUSE Professional</b>	First Second Second Third	Brassavola Little Stars x cordata Epi hugomedianae Paph primili 'Green Elf' Comparettia macroplecton	Edgar Stehli Edgar Stehli Wayne Roberts Edgar Stehli
<b>GREENHOUSE Amateur</b>	First Second Third	Blc Hawaii Stars Paradise C. Rockefeller Brassavola Little Stars	Keith Alexander John Rini John Rini
<b>CATTLEYA Classes 10 – 26</b>	First Second Third	Lc G.C. Roebling Rlc Majestic Light 'Crown' Lc Pure Soul 'Yutaka Morimoto'	Chester Kieliszek Paul Bujak Pam Everett
<b>PAPHIOPEDILUM Classes 27 - 39</b>	First Second Third	Paph Ang-Thong Paph Henryanum Paph Winston Churchill x spicerianum	Bob Galaska Dave Miller Bob Galaska
<b>PHRAGMIPEDIUM Classes 40 -42</b>	First Second Third Third	Phrag Don Wimble Phrag Nicole Towers Phrag Barbara LeAnn x caricinum Phrag Hybrid	Bob Galaska Bob Galaska Bob Galaska Patty Conrad
<b>PHALAENOPSIS Classes 43 – 59</b>	First Second Third	Phal I-Hsin Sesame Phal Hybrid Phal Spotty	Allan Lund Bob & Marilyn Heidehman Dave Miller
<b>VANDA Classes 60 – 69</b>	First Second Third	Vanda sanderiana alba Vanda Lou Sneary 'Bluebird' Cerotocertron Fesselii x Tubecentron Nio Girl	Patty Conrad Pam Everett Patty Conrad
<b>ONCIDIUM Classes 70 – 78</b>	First Second Second Third	Gombrassitonia Hilo Ablaze 'Hilobold' Onc Tsiku Marguerite Brsdm Nittany Gold 'Dr John' Tolumnia Genting Pink Lady	Paul Bujak Pam Everett Bob & Marilyn Heidehman Dave Miller
<b>CYMBIDIUM Classes 79 – 81</b>	First Second Third	No Entry No Entry No Entry	
<b>DENDROBIUM Classes 82 – 88</b>	First Second Second Third	Diplocaulobium tentaculatum Den lamyaiiae Den convexipes Den rigidum	Patty Conrad Patty Conrad Patty Conrad Patty Conrad
<b>MISCELLANEOUS Classes 89 - 99</b>	First First Second Second Third Third	Coelogyne zurowetzii Pleurothallis microcardia Lepanthes calodictyon Lysudamuloa Red Jewel Spathoglottis picate Lycaste Leo Riopell	Dave Miller Patty Conrad Patty Conrad Patty Conrad Patty Conrad Bob Galaska
<b>FEWER THAN 20 PLANTS</b>	First Second Third Third	Onc maculatum Phal Hybrid Bulbo Elizabeth Ann Buckleberry Bllra Marfitch Howard's Dream	Teressa Nemeth Meredith Dreshar Teressa Nemeth Terri Hudak

**BEST SPECIES**Epi hugomedianae  
Coelogyne zurowetziiEdgar Stehli  
Dave Miller**BEST MINATURE**Comparettia macroplecton  
Onc Twinkle 'Red'Edgar Stehli  
Bob & Marilyn Heidelman**FINAL SHOW TABLE STANDINGS FOR 2016**

FINAL STANDINGS FOR 2016	<b>Greenhouse: Pro</b>	<b>Points</b>
	Edgar Stehli	250
	Wayne Roberts	148
	<b>Greenhouse: Am</b>	
	John Rini	149
	Keith Alexander	45
	<b>Under Lights/Windows:</b>	
	Patty Conrad	313
	Bob Galaska	274
	Allan Lund	214
	Pam & Darryl Everett	176
	Dave Miller	161
	Marilyn & Bob Heidelman	115
	Bob Lum-King	97
	Jerry Echols	48
	Pat Corbett	42
	Chester Kieliszek	42
	Katherine Binder	35
	Robert Lukacevic	29
	Pat Sutherland	29
	Marolyn Smith	25
	Brenda Kammer	21
	Paul Bujak	18
	Diane Kofsky	14
	Debbie Gotsch	12
	Linda Beluscak	11
	Helen Brooks	10
	Becky Cotterill	5
	Linda Miller	4
	<b>Less Than 20 Plants:</b>	
	Meredith Dreshar	60
	Carol Lalonde	53
	Teressa Nemeth	42
	Ingrid Tuxhorn	26
	Nancy Moore	11
	Marybeth Costello	6
	Terri Hudak	5

First, second and third place finishers in each division won \$25, \$15 and \$10 gift certificates respectively to be used at Our Show, Robert's Flower Supply or Windswept in Time Orchids. These were handed out at the end of our December meeting. Thank you to all who brought in their blooming plants for our members to enjoy on the show table and good luck with this year's contest.

It is show time again and we are looking for plants to display at the Greater Cleveland Orchid Society show setting up on Friday 2/17, the Greater Akron Orchid Society show setting up on Friday 3/3 and for the Central Ohio Orchid Society show in Columbus setting up on Friday 3/31. If you have something nice which you would like to show, please contact me to make arrangements to get the plants to any of the shows, 330-467-3731, or reply by email to [kieliszekc@aol.com](mailto:kieliszekc@aol.com). For the Greater Cleveland show, you

could bring them to the meeting on 2/15 and we could make arrangements for someone going to the GCOS show set up to take them.

**FOR ALL:** Those people bringing plants to any of our displays we will be setting up at the various shows please include a sheet of paper with your name, the plant's name and the cross if you know it. The plants name and cross should be found on its label. Orchids with no identification tags or labels can still be displayed as unknown. This information written down on paper makes it easier for the person setting up the display to fill out the registration forms and labels for all the plants in the display. Better yet, make out one of the registration tags we will have available at the February meeting for each plant similar to what we have been doing for the plants on the show table over the last several months. Also put your name on the pot. This can be an address label somewhere on the pot making it easy to get the plants back to their owners.

We are again looking for sponsors for the trophy awards at our show, we still have a few classes without a sponsor, (\$20.00 to sponsor with your name going on the class award as the sponsor). Contact me if you are interested at 330-467-3731 or kieliszekc@aol.com.

### *From the President's Potting Bench,*

Hello My Friends,

Our December meeting and Christmas party was pure delight. Wayne purchased some very beautiful plants, of which I was very pleased with. Great job Wayne. The food was awesome, plenty of everything. Marolyn and Pat did an amazing job with the sides they had brought in to go with the turkey, ( of which I didn't get a chance to try ), the ham and the chicken. Yes John, the sweet potatoes were very good also. I would like to thank all the members who brought in a side to share at our Christmas meeting, they always make everything so much nicer. The New Year jumped right in, of which I hope was good for all. Now with our February meeting coming-up, we need to focus on our show, which is late in April. We are going to need help, so PLEASE be gracious, and try to donate some of your precious time, with set-ups and tear downs, at the front desk, and of course for Friday hospitality and Saturday breakfast and lunch for our helpers and our vendors, we will need some sides to go with the main dishes. I believe I can count on WSOS members, because, "you are the best". Until then, have a wonderful day.

God Bless, your president, Elaine.

Elections were held at the December meeting. Everyone retained their respective positions with the exception of Edgar Stehli who declined to run again as trustee.

### Current Officers for 2017 – 2018 Contact Information

President:	Elaine Galaska	<a href="mailto:emgalaska@hotmail.com">emgalaska@hotmail.com</a>	330-562-2943
Vice President:	Wayne Roberts	<a href="mailto:rfes@orchidmix.com">rfes@orchidmix.com</a>	440-236-5571
Treasure:	John Rini	<a href="mailto:jrini16@gmail.com">jrini16@gmail.com</a>	216-538-5537
Secretary:	Bob Galaska	<a href="mailto:emgalaska@hotmail.com">emgalaska@hotmail.com</a>	330-562-2943
Trustee:	Chester Kieliszek	<a href="mailto:kieliszekc@aol.com">kieliszekc@aol.com</a>	330-467-3731
Newsletter:	Chester Kieliszek	<a href="mailto:kieliszekc@aol.com">kieliszekc@aol.com</a>	330-467-3731
Librarian:	Allan Lund	<a href="mailto:allan.lund320@gmail.com">allan.lund320@gmail.com</a>	
Show Chairs:	Wayne Roberts & Chester Kieliszek		
Immediate Past President	Teressa Nemeth	<a href="mailto:gardenguru@centurytel.net">gardenguru@centurytel.net</a>	440-233-8757

The board members met on February 8<sup>th</sup> and discussed the Mid America and if West Shore is still interested in being the host society. We have a number of volunteers, but several of these members have multiple tasks at this time and we need more people. We will have a vote by the membership at the February meeting to determine if we want to proceed with this endeavor or alert the Mid- American Orchid Congress if we decide not to. Bring your opinions and comments to the meeting.

#### Meeting dates in 2017

Weds. February 15 <sup>th</sup>	Russ Vernon on Odontoglossums
Weds. April 19 <sup>th</sup>	Staging and entering your plants for our show with setup April 28 <sup>th</sup>
Sat. & Sun April 29 <sup>th</sup> & 30 <sup>th</sup>	WSOS Show at Strongsville Rec. Center
Weds. May 17 <sup>th</sup>	Tom Sampliner on Borneo
Weds. June 21 <sup>st</sup>	Wayne Roberts & Edgar Stehli on Summering your orchids
Sun. August 20th –	Picnic
Weds. September 20 <sup>th</sup>	TBD
Weds. October 18 <sup>th</sup>	TBD
Weds. December 20 <sup>th</sup>	Christmas dinner and gift plants

I would like to welcome the following new members to West Shore since the last newsletter went out, Rodger & Ginny Thaxton, Fran Houghtlen and Brenda & Greg Zeise. We are always looking for new members to keep our society strong, so bring a friend who likes growing things to our next meeting and introduce them to the wonderful world of orchids.

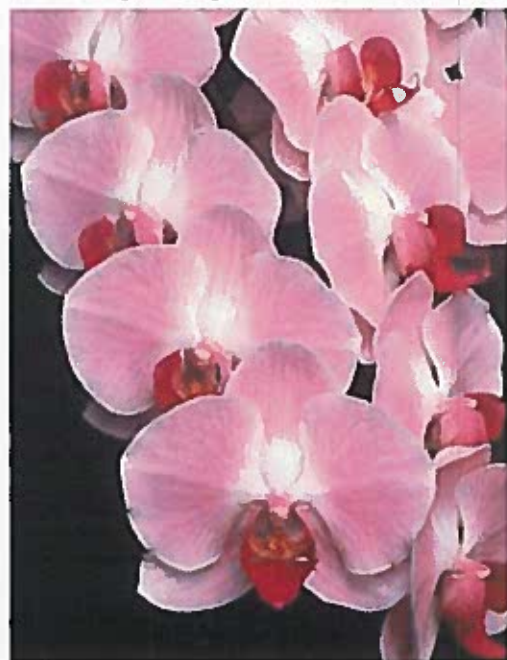
On a sad note, we would like to offer our condolences to Ken Martin who lost his wife Barbara last December. Both were members of West Shore.

Anyone not receiving a newsletter email (Those on snail mail) and wanting one can request it by emailing Chester Kieliszek at [kieliszekc@aol.com](mailto:kieliszekc@aol.com) and I will put you on the email list.

The following article was reprinted from the American Orchid Society website. Copyright American Orchid Society -- [www.aos.org](http://www.aos.org)

## The Importance of Staking

Orchids growing in the wild don't have the benefit of a caretaker to primp and preen them. But their



only purpose is to attract a pollinator, not please us humans. If we grow orchids to display in our homes or exhibit at shows and orchid society meetings, we want them to look their best. Our regimen of giving our orchids the best of care must include staking the flowers. Some beginners may not consider staking part of orchid growing, or may be too intimidated to try their hand at it. But the flowers are the reward we grow orchid plants for and we should help them present those flowers in their most glorious beauty. This is not to imply that all orchids must be staked, but there are some orchids and some cases where staking is of great benefit.

LEFT: A properly staked inflorescence will produce a beautiful presentation of flowers! *Phalaenopsis* Mem. Daisy Cohen 'Quick' AM/AOS grown by Savilla Quick. Photo: © G. Allikas

### Why Stake?

It is essential to stake an orchid inflorescence if the plant is

being transported to a meeting or show. The movement of travel can easily damage flowers or even break an inflorescence. Many orchids will present their flowers in a more pleasing manner if the inflorescence is staked. Just today I was looking through the shade house and found a *Cattleya intermedia* inflorescence that had grown quite tall over Easter weekend. It was starting to bend and the weight of the four flowers was also making the pseudobulb bend as well. Had I left this spike to develop on its own the flowers would be nodding downward. That doesn't matter to a bee but it does to us who want to admire the flowers! Commercial phalaenopsis growers always stake inflorescences, starting early to create a beautifully shingled presentation of flowers. Most orchids with long, multifloral inflorescences show better if staked. Both single-flowered and multifloral Paphiopedilum hybrids should be staked to allow the inflorescence to develop straight and stay that way. Many cattleyas, especially those with long flower spikes or heavy flowers benefit from staking. In short, any orchid may be improved by staking its inflorescence excepting some species and of course, orchids with pendant inflorescences.

### Materials

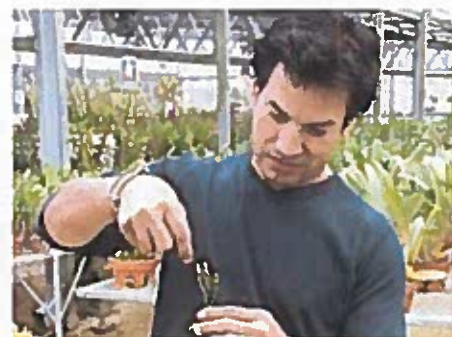
As the name suggests, staking involves a rigid stake and devices to fasten the orchid inflorescence to it. The stake can be galvanized metal wire of varying gauges or bamboo. Bamboo is rigid and will provide good support for a phalaenopsis inflorescence and can provide a decorative element. Galvanized wire will also offer good support and has the advantage that it can be bent. This is useful for orchids with pseudobulbs where the stake cannot be placed close enough to the spike. Some galvanized wire stakes are made to firmly clip on to the edge of a clay pot. These are useful with tall pseudobulbs when firm support is needed for the pseudobulb as well as the flower spike. Green or brown twist ties and plastic "dragonfly" clips are currently among the most popular fasteners. Both offer quick and secure support. Twist ties are sometimes covered with a piece of tied raffia for decoration. Floral tape can be used with galvanized wire to gently arch a heavy inflorescence. We like to use thin gauge electrical solder as a fastener. It is flexible enough to quickly wrap and secure an inflorescence and stake of any length, and it can be reused. The silver-gray color is discreet.

### Method

There are many ways to stake an inflorescence and there are not really any "wrong" or "right" techniques, although AOS judges do frown on plants with flowers that have been excessively manipulated into position. The most important rule of staking is to be careful! A developing inflorescence can seem amazingly plastic and bendable and then a moment later, be as brittle as glass and break in your fingers. It is almost impossible to correct poor flower presentation once the flowers are fully open, so starting early not only makes the job easier, it also minimizes the potential tragedy of a broken spike. Phalaenopsis inflorescences should be staked when they are 6-12" tall depending on the particular hybrid or species. For an arching, shingled inflorescence you want the first tie to be an inch or two below the first bud. Other multifloral orchids such as oncidiums and cymbidiums can also be staked once the spike is long enough to place a tie below the first bud. Do not cut the stake until the inflorescence is close to its maximum length so that additional support can be added as it develops. Cattleyas and similar orchids can be staked once the buds begin to twist from their upside down position.

### Why Stake?

While staking is a matter of personal taste, there are certain orchids that usually need some help presenting their flowers. I personally feel that a lot of hardware on a flowering orchid plant detracts from the flowers' beauty so I try to keep staking to a minimum and as inconspicuous as I can make it. Staking is an important part of grooming your orchids so they present their beautiful flowers to their fullest potential.



***Windswept in Time Orchids – OPEN HOUSE!***

Edgar and Kim Stehli

2017 Open House Events

Spring: May 27 & 28 (Sat. & Sun.) 11am – 5pm

Fall: November 4 & 5 (Sat. & Sun.) 11am – 5pm

8066 Skyline Drive

Broadview Heights, Ohio 44147

440-838-5757