

# WEST SHORE ORCHID SOCIETY

## MAY 2013

NEXT MEETING    Wednesday, May 15, 2013

TIME                    6:00 p.m.            Conversation, Show Table plant registration.

                             6:30 p.m.            In our beginners' corner, Edgar Stehli will talk about Angraecum orchids, the genera that fall into this group, and how to care for them.

                             7:00 p.m.            Program: Nile Dusdieker and his wife, Lois, are retired physicians living in North Liberty, Iowa. They have been growing orchids for more than 25 years in their greenhouse atop a third garage. They are collectively known as the "orchid snoops," looking for and learning more about orchids every day. Nile is an AOS probationary judge at the Chicago Judging Center. He has written articles published in the AOS "Orchids" magazine concerning Paphs 'Goin' to the Dogs' (published in Orchids magazine in May, 2011) and Bulb - o licious (published in Orchids magazine in May, 2013). He will be speaking on Australian orchids. Nile will not be bringing plants with him, but Wayne and Edgar will have plants for sale.

PLACE                    North Olmsted Community Cabin, 28114 Lorain Road, North Olmsted

### PROGRAM

SHOW TABLE        Our show table was again fabulous in April. We had 50 plants show up for judging. We started a new contest with the February meeting, so bring in your plants for judging. Again, you earn 10 points for 1<sup>st</sup>, 6 for 2<sup>nd</sup> and 4 for 3<sup>rd</sup> place winners. You also can win 8 points each for best species or best miniature. Anyone bringing in a plant receives 1 point for each plant brought to the show table and registered. Remember, our goal for 2013 is to get 100% participation.

### ORCHID CALENDER

Our membership year is January to December. If you joined West Shore and paid your dues in August thru December, 2012, or renewed at our December, February, or April meetings, you are covered for 2013. For the rest of us, its time to renew and we do hope you renew as where else can you see beautiful orchids to admire, hear speakers from around the country and talk to growers who are happy to share their knowledge, along with a gift orchid at our December meeting all for the small sum of \$20.00. To renew you can pay your dues at the May meeting or send a check made out to the West Shore Orchid Society to our treasurer, John Rini, 6490 E. Vancey Dr., Brookpark, Ohio 44142.

## Orchid Society of Northwestern Pennsylvania Show

When Saturday & Sunday May 11<sup>th</sup> & 12<sup>th</sup>

Where JMC Arena, 423 W 38<sup>th</sup> St., Erie, PA

Description Contact: Susanne Lester 814-838-2522 [lesters@velocity.net](mailto:lesters@velocity.net)

## Open House Roberts Flower Supply

When Saturday & Sunday May 25<sup>th</sup> & 26<sup>th</sup>

Where 12390 Root Rd., Columbia Station, OH. 44028 440-236-5571. All days from 10 AM to 4:30 PM.

Description Orchid plants & Supplies. See below for details.

## Open House Windswept in Time Orchids

When Memorial Day Weekend, Saturday & Sunday, May 25 & 26 - 11 AM to 5 PM both days.

Where Kim & Edgar Stehli's greenhouse, 8066 Skyline Drive, Broadview Hts. Tel. 440-838-5757. This is just west and north of the Wallings Rd. and I-77 interchange.

Description See below for details

## WSOS Meeting

When Wednesday June 19, 2013 – 6:00 PM Conversation, 7:00 PM Main Speaker

Where North Olmsted Community Cabin, 28114 Lorain Road, North Olmsted

Description We will have as of now an un-named speaker which will be announced in our next newsletter.

## ANNOUNCEMENTS

It is STILL show time and we are looking for plants to display at the Orchid Society of Northwestern Pennsylvania Show with set up on Friday, 5/11/13. If you have something nice which you would like to show, please contact me to make arrangements to get the plants to this last show of the season, 330-467-3731, or reply by email to [kieliszekc@ferro.com](mailto:kieliszekc@ferro.com).

**FOR ALL:** Those people bringing plants to any of our displays we will be setting up at the various shows please include a sheet of paper with your name, the plant's name and the cross if you know it. The plants name and cross should be found on its label. Orchids with no identification tags or labels can still be displayed as unknown. This information written down on paper makes it easier for the person setting up the display to fill out the registration forms and labels for all the plants in the display. Better yet, make out one of the registration tags we will have available at our monthly meetings for each plant similar to what we have been doing for the plants on the show table over the last several months. Also put your name on the pot. This can be an address label somewhere on the pot making it easy to get the plants back to their owners.

## APRIL SHOW TABLE WINNERS

GREENHOUSE Professional	First	Lyc Pixie	Edgar Stehli
	Second	Leptotes bicolor	Edgar Stehli
	Third	Paraphalaenopsis labukensis	Edgar Stehli
GREENHOUSE Amateur	First	V Margaret Mabbs 'Pink Cloud'	John Rini
	Second	Lc Time Life x Blc Lisa	John Rini
	Third	Onc Irene 'Big Mama'	John Rini

WINDOWSILL & UNDER LIGHTS	First	Phal Novelty	Debbie Gotsch
	First	Phrag kovachii	Bob Lum King
	Second	Paph Robinianum	Allan Lund
	Second	V Pachare Delight 'Park Purple Blue'	Allan Lund
	Third	Burr Living Fire 'Glowing Embers'	Allan Lund
	Third	Paph Enlightened Wings	Bob Galaska
FEWER THAN 20 PLANTS	First	Phal Hybrid	Anita Vergilii
	Second	Phal Hybrid	Anita Vergilii
	Third	Phal Hybrid	Keith Alexander
BEST SPECIES		Phrag kovachii	Bob Lum King
BEST MINATURE		Chiloschista lunifera	Wayne Roberts

### SHOW TABLE STANDINGS FOR 2013

STANDINGS FOR 2013	<b>Greenhouse: Pro</b>	<b>Points</b>
	Edgar Stehli	37
	Wayne Roberts	21
	<b>Greenhouse: Am</b>	
	John Rini	50
	<b>Under Lights/Windows:</b>	
	Bob Lum King	47
	Allan Lund	26
	Pat Corbett	14
	Chester Kieliszek	13
	Debbie Gotsch	12
	Bob Galaska	9
	Darryl & Pam Everett	4
	Katherine Binder	1
	Mel Goldstein	1
	Cheryl Nader	1
	Jim Thompson	1
	<b>Less Than 20 Plants:</b>	
	Anita Vergilii	13
	Keith Alexander	5

Thank you to all who brought in their blooming plants for our members to enjoy on the show table and good luck with this year's contest.

A big thanks goes out to Pat Corbett and Marolyn Smith who drove down to Columbus for both set up and tear down of the Central Ohio Orchid Society Show. They did a very nice job as the West Shore display took first place in its class. Listed below are all the winning plants. We took 15 ribbons with 19 entries. Congratulations go to Teresa Nemeth whose Tricopilia won a COOS crystal trophy for Best Tricopilia in show. An apology goes out to John Rini as his very nice vanda and ascocenda forgot to get in the car and stayed at home in the front window for all my neighbors to enjoy!

I would like to welcome the following new members to West Shore since the last newsletter went out and it is nice to see a number of new faces – Christine Miles, Dan & Joyce Shramo, Susan Davis, Bethany & Dorel Stefan, Jackie Mantle, Susan McMillin and Jerry & Sue Echols. To keep our society growing bring a friend who likes growing things to our next meeting and introduce them to the wonderful world of orchids.

We now have 72 of our current 86 members who renewed or joined West Shore on email. Anyone not receiving a newsletter email and wanting one can request it by emailing Chester Kieliszek at [kieliszekc@ferro.com](mailto:kieliszekc@ferro.com) and I will put you on the email list.

From the President's desk,

Ahhh springtime, the earth renews itself again with warm temperatures, colorful and fragrant blooms and grass growing too quickly.

My back yard is paradise in the spring. Sitting on the deck surrounded by the sweet, spicy scent of Korean Spice Viburnum and enjoying the bird song, I notice the *Cypripedium Kentuckiense* I planted last year is up about 4 inches! Whoa. I have walked past this bed every winter day wondering if the "Cyp" would make a comeback. It has and with 3 spikes! (It had one spike when I planted it last year.)

A little shade and good drainage, anyone can grow terrestrial orchids. Check out the Roberts Floral Supply open house to see the largest private collection of *Cypripediums* in OH and try growing one at your place.

The fabulous Spring blooms also mark another event, the end of show season. Mother's Day weekend, May 11 and 12, will be the last competitively judged show in Erie, PA. Chester, Pat and Marolyn will be setting up the display for WSOS and are in need of beautiful plants. This is your last chance to collect another ribbon or trophy for the year. Call Chester at 330.467-3731 to make arrangements for plant pick up. I see what you bring to the show table; let's bring back another 'Best of Class' ribbon for the Society.

Don't miss 'Australian Orchids', the focus of our May presentation by Dr Nile Dusdieker. Australia has a few micro-climates including hot and dry that I look forward to hearing about. If you have a friend who enjoys orchids, bring them along to hear Dr Dusdieker's presentation.

See you May 15th.

Teresa

## CENTRAL OHIO ORCHID SOCIETY SHOW WINNERS

Exhibit		Blue
Marolyn Smith	Cymbidium – Unknown	Yellow
John Rini	Blc Ports of Paradise 'Glennyrie's Lime Giant'	Blue
	Lyc Shoalhaven x Shoalhaven	Yellow
	Den Hybrid	Blue
	Epi bractescense	Yellow
	Onc Irene 'big Mama'	Blue
	Miltonia flavescens	Red
Teresa Nemeth	Trichopilia suavis	Red, Best Trichopilia Award
	Phal Unknown – Pink	Blue
	Paph Saïen #2 x Paph Limelight	Yellow
Pat Corbett	Colmamara Masai Red	Red
	Lc Loog Tone 'S.D.'	Red
Chester Kieliszek	Cym Pearl Easter 'McBeans'	Red
	Cym Rincon Fairy	Yellow

## Current Officers for 2013 – 2014 Contact Information

President:	Teresa Nemeth	<a href="mailto:gardenguru@centurytel.net">gardenguru@centurytel.net</a>	440-233-8757
Vice President:	Wayne Roberts	<a href="mailto:rfs@orchidmix.com">rfs@orchidmix.com</a>	440-236-5571
Treasurer:	John Rini	<a href="mailto:jrini@sbcglobal.net">jrini@sbcglobal.net</a>	216-990-4960
Secretary:	Bob Galaska	<a href="mailto:emgalaska@hotmail.com">emgalaska@hotmail.com</a>	330-562-2943
Trustee:	Edgar Stehli	<a href="mailto:edgarstehli@sbcglobal.net">edgarstehli@sbcglobal.net</a>	440-838-5757
Newsletter:	Chester Kieliszek	<a href="mailto:kieliszekc@ferro.com">kieliszekc@ferro.com</a>	330-467-3731
Librarian:	Allan Lund	<a href="mailto:allan.lund320@gmail.com">allan.lund320@gmail.com</a>	
Show Chairs:	Wayne Roberts & Chester Kieliszek		
Immediate Past President	Chester Kieliszek.		

The following article is reprinted from the August 2009 issue of the AOS Beginner's Newsletter.  
Copyright American Orchid Society -- [www.aos.org](http://www.aos.org)



### Epiphyte or Terrestrial? Sympodial or Monopodial?

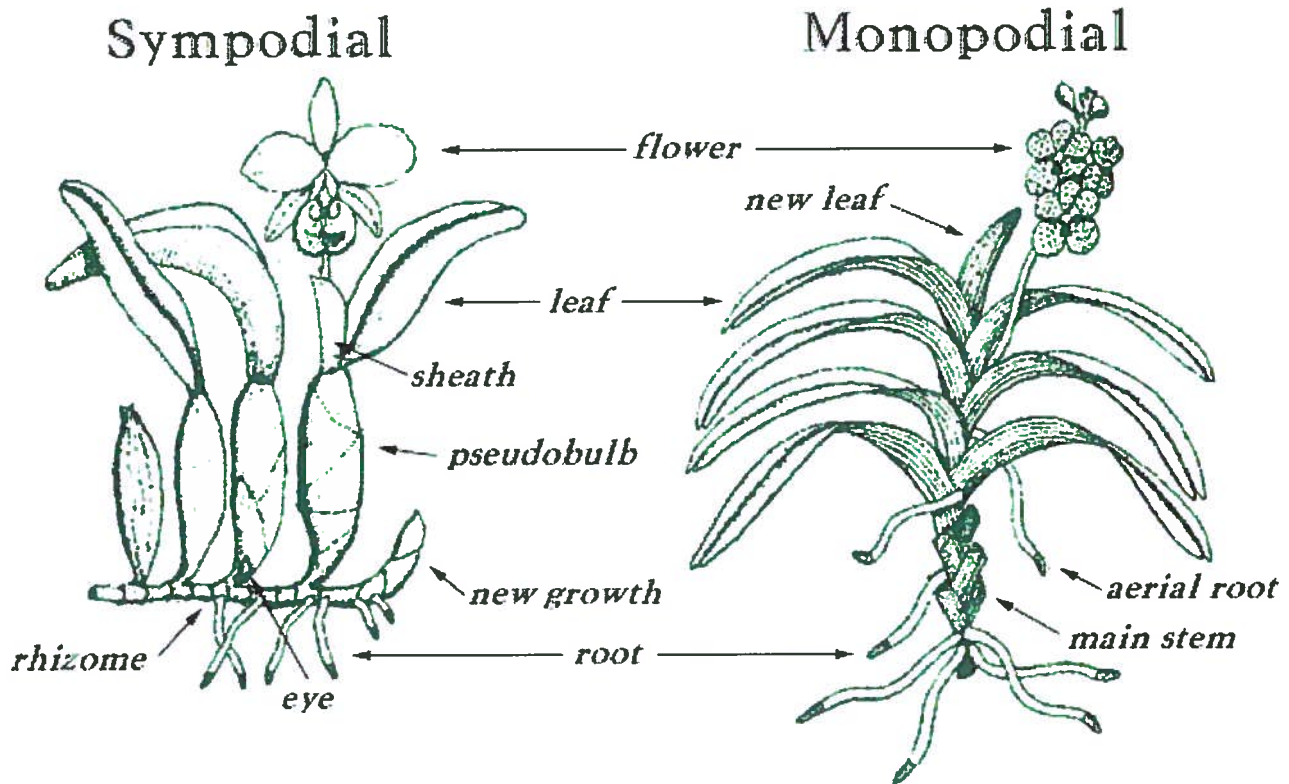
Understanding where and how orchids grow will help you better understand how to grow them. This newsletter looks at the growth habits of orchids.

The structure of an orchid plant is the same as any plant for it has roots, stems, leaves and flowers. But these parts are adapted to its way of life and differ somewhat from familiar plants which you grow in your garden.

#### Epiphytes and Terrestrials

Most of the cultivated orchids are *epiphytes*, such as the Colombian *Cattleya trianae* pictured above. They do not grow in the ground but instead grow in trees or on rocks. This puts their roots out into the air rather than underground. The word "epiphyte" (EP-ih-fite) means "air plant" or literally "to grow upon a plant". Epiphytes are not parasites. They do not take anything from the host plant. Epiphytes perch upon other plants but get their moisture and nutrients from air, rain and debris. Cymbidiums and other orchids are terrestrial, which means "growing in the ground". The *Sobralia* pictured at the bottom of the page is a terrestrial orchid. Most of the native orchids of the United States and all the natives of Europe are terrestrials. Some epiphytic orchids have adapted to growing on rocks because nearby forests may not offer enough light. Rock-growing orchids are known as lithophytes.





### Sympodial and Monopodial

There are two types of growth found in orchid plants. One growth pattern is called sympodial (sim-POH-dee-al), the other is monopodial (mon-o-POH-dee-al).

For sympodial think of sideways. An orchid with sympodial growth moves sideways. From a connecting stem (rhizome) which grows horizontally, it puts up successive growths in which each one is a duplicate of the one before.

Examine the sketch. The upright growths are called pseudobulbs, each a repetition of the one before and growing parallel to each other. A plant may produce one new pseudobulb at a time, perhaps even only one per year. But it may make two or more growths simultaneously, and a large plant may make several new growths at the same time. Hybrids may have more than one cycle of growth per year.

The majority of the cultivated orchids are sympodial - they grow sideways. New growth begins at the base of the previous mature growth. *Cattleya*, *Oncidium*, *Dendrobium* and *Cymbidium* are all examples of sympodial orchids.

On the other hand, monopodial (mon-oh-POH-dee-al ) orchid plants grow continuously taller - upwards, and some reach many feet in height under ideal conditions. Think of the vandas, growing outdoors in the tropics. Others have reasonable height limits, such as the phalaenopsis group. Monopodial means "one foot".

A monopodial orchid has neither pseudobulbs nor rhizomes. It grows continually upward from the top of the plant. It produces roots and flowers at intervals from the vertical stem.

Quite in contrast to the foliage habits of sympodial orchids, a monopodial orchid has alternate leaves the entire length of the stem. Lower leaves may fall off as the plant ages. *Phalaenopsis*, *Vanda*, *Ascocenda* and *Angreacum* are all examples of monopodial orchids.

Greg Allikas, August 2009

# 20<sup>th</sup> Spring Open House

Roberts Flower Supply

12390 Root Rd Columbia Station OH 44028 440-236-5571

**Over 25 years in Business**

May 21-24, 2013 by appt.(hardy native orchids) &

May 25<sup>th</sup> – 26<sup>th</sup>, 10 - 4:30

Orchid plant and supply specials

New large selection of species

Largest private display of native orchids in Ohio

**American Cyps pubescens, parviflorum, regina, kentuckiense...**

**Asian Cyps tibeticum, macranthos, formosanum ...**

**And other hardy orchids for sale.**

**“Luau” Lunch provided 11-2 Sat & Sun May 25 & 26**

<b>Menu:</b>	<b>Appetizers:</b>	<b>Desserts:</b>
<b>Pulled pork Salads Other to be determined</b>	<b>Shrimp Tropical fruits</b>	<b>To be determined</b>

**Coffee-Tea-Soft drinks**

**Wear an orchid themed or Aloha shirt (or other item) and  
get 10% off your purchase or a Free Plant**

Assorted hand made orchid pots

Combine with Windswept In Time open house Sat & Sun

For a map see [www.orchidmix.com](http://www.orchidmix.com)

**Special Note**

**We have a new run of large seedlings and blooming size Paphs including multiflorals that will be  
available for this open house.**

**Species from Columbia, Venezuela, Brazil, Philippines, Malaysia, Jamaica, Ecuador**

**Windswept in Time Orchids is having their spring open-house both Saturday and Sunday,  
from 11:00 to 5:00 on the 25th & 26th of May. There will be refreshments and snack food all day  
long. There will also be a bargain table of plants left over from the show season. Mark your  
calendar now, and plan on visiting with us, and other orchid enthusiasts, while you check out the  
orchid plants. Our address is 8066 Skyline Drive, Broadview Heights, Ohio 44147 We are  
located just west of Route 77 at the Wallings Rd exit. Feel free to call if you need directions, our  
phone number is 440-838-5757.**